



0455 619 454  
PO Box 6323, Clifford Gardens, Toowoomba QLD 4350  
info@ddec.org.au | [www.ddec.org.au](http://www.ddec.org.au)

Protecting and promoting the environment in our region.  
Unite Advocate Innovate

April already, this year is spinning by. At DDEC we have had a big month of activity so there is lots to report on.

Firstly, I would like to thank committee member Christel Pidcock for stepping up to replace Jenny Withnall as our secretary. A huge thank you to Jenny Withnall for her work in the role and thanks to her also for remaining on the committee.

There is currently major flooding in Western Queensland so our hearts go out to all those affected and the communities that will be beginning the journey to recovery.

This month we were very focused on our Shaping Renewables on the Downs Forum that took place on the 26th of March at the Burke and Wills Hotel (picture below). The forum was a huge success with 120 registrants and a lively mix of community members, landholders and stakeholder representatives. There were 5 panel sessions and some of the slides [can be found here](#).

Dr Megan Brady who is now working for QCC and DDEC on our own local project to investigate potential nature benefits from the renewables rollout is working on collating the issues and questions arising from the forum into a report to give to government representatives.

This month we have a Nature Drinks event with Colin Dorber from Lockyer Valley Food Co-op on April 8th and working group meetings as per usual.

If you want to get involved with DDEC there is always lots going on. If you want to start an environmental project and need support to find fellow travellers who do get in touch. You can find out about the latest volunteer opportunities [on our seek page here](#).

For the earth,

Ahri Tallon, DDEC Coordinator

Darling Downs Environment Council  
<https://www.ddec.org.au/>





## DDEC Updates

---

### Help DDEC Earn when you Return

When taking your eligible recyclable containers to a container refund point you can donate the proceeds to DDEC by using our member number **(C10571344)**– that's twice the impact for the environment!

Glass wine and spirit bottles from 150ml to 3L are now accepted for a 10-cent refund at container refund points across Queensland.



# Upcoming DDEC Events

## Save Deongwar Bio Blitz Campout

On behalf of the Save Deongwar campaign I would like to invite you along to join us for another day in the bush admiring incredible flora and fauna. Together using citizen science we will collect information on what plants, animals and fungi call Deongwar home and use that information to advocate for its protection.

**When:** Sunday 13th April, 5am - 10:30am. Camp out option available, details provided after RSVP.

**Where:** [Deongwar State Forest](#). RSVP for meeting location.

[RSVP HERE](#)

Deongwar State Forest is on the lands of the Dungibara People. Home to 4700 hectares of intact, high conservation value remnant native forest. Although logging has now ended in Deongwar the area is still not protected! Although there are no immediate threats, transferring the area to national park would mean long term protection from possible future logging and destructive industries.

At our BioBlitz you will join a small group of people who will work together using iNaturalist to take records and observations of what you find in the forest. This is a great opportunity to connect to the forest we are trying to protect, taking active steps to help protect it while also learning and having fun with others.

Further information around meeting place and accommodations options will be provided in the follow up email.

Before the BioBlitz - Download and have a play with the iNaturalist app. Join the [Forest Watch Project](#).

RSVP Here





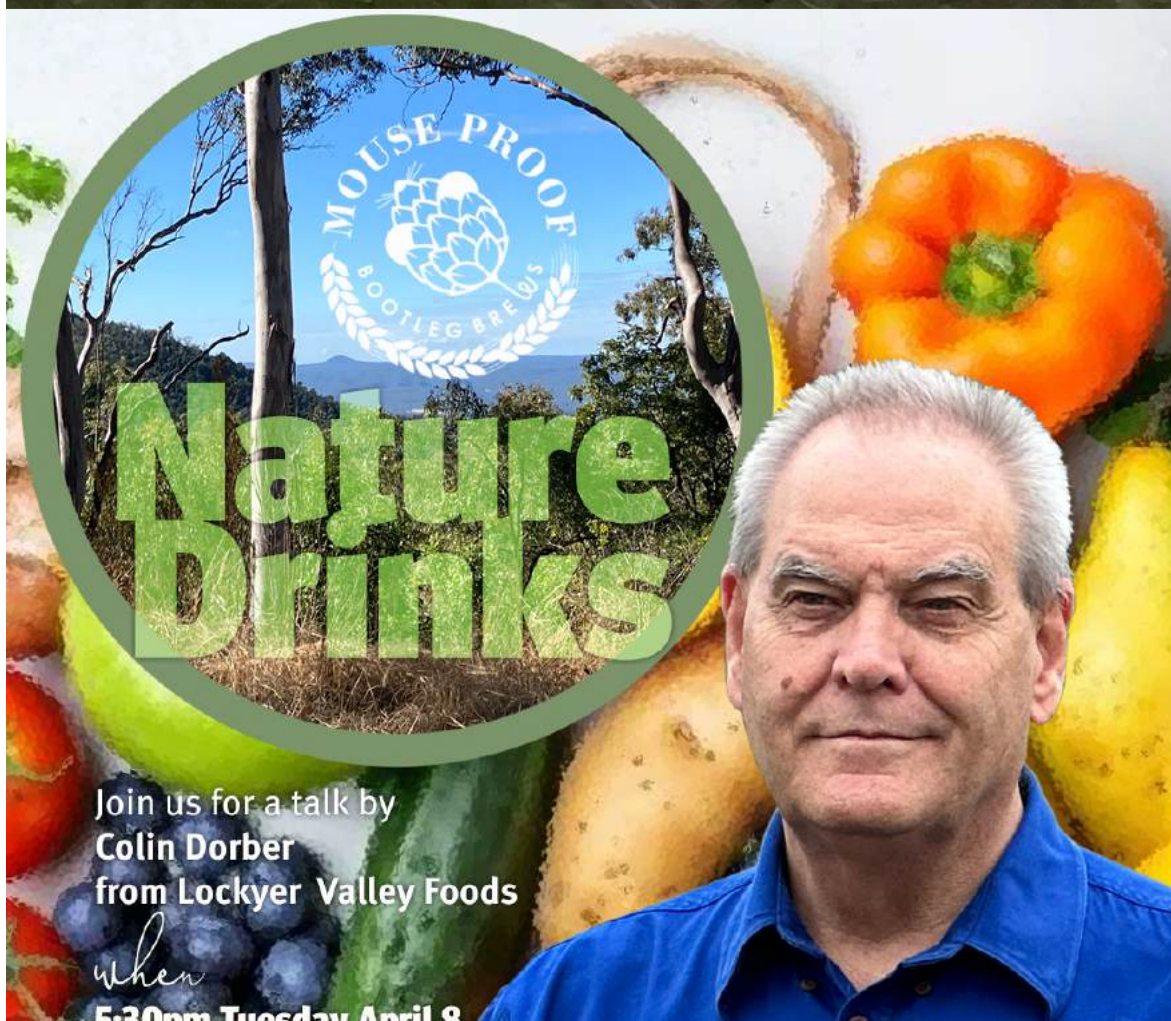


**SIGN UP  
QR CODE**



**SATURDAY – 12TH OF APRIL**  
**OVERNIGHT CAMPING FROM 2.00PM.**

**SUNDAY – 13TH OF APRIL**  
**SUNRISE BIOBLITZ. ARRIVE BY 5.00AM.**



**Nature  
Drinks**

Join us for a talk by  
**Colin Dorber**  
from Lockyer Valley Foods

*when*  
**5:30pm Tuesday April 8**





This months Nature Drinks events features Colin Dorber to talk to us about a movement to build a food and vegetable co-op in the Lockyer Valley preserving more food, reducing food wastage, creating a social economy and helping the community.

[RSVP Here](#)

## Volunteers Needed: Withcott Koala Tree Maintenance

Help provide food for local Koalas in care by maintaining the Koala Tree Planting in Withcott. First Sunday of the month from 3pm you can meet across the bridge at Shorelands Drive, Withcott. Organised by Toowoomba Wilderness Society and DDEC. Contact Jenny on 0429 072 555



## Community Updates







# How Climate Pollution is Driving More Destructive Storms and Cyclones

Climate pollution made Tropical Cyclone Alfred more destructive and intense - and we've unpacked the science behind it in our new report, [Eye of the Storm](#).

For weeks, we've worked to help Australians connect the dots between climate pollution and Alfred's destruction as the disaster unfolded.

Now, as decision-makers, media, and communities look to take lessons from this event, it's critical we arm them with the science so they understand the urgent need to cut climate pollution, and prepare for the worsening disasters we can't avoid.

[\*\*Eye of the Storm: How climate pollution fuels more intense and destructive cyclones\*\*](#)



**EYE OF THE STORM:**  
HOW CLIMATE POLLUTION  
FUELS MORE INTENSE AND  
DESTRUCTIVE CYCLONES



Some of the key findings from [Eye of the Storm](#) include:

- **Hotter oceans** - caused by climate pollution - supercharged Alfred's winds, waves and rainfall.
- **Rising sea levels** made storm surges even more destructive, washing away iconic beaches along 500 kilometres of coastline.
- **Alfred was slow moving**, which gave communities more time to prepare - yet the damage was still devastating.
- **As the oceans heat up**, scientists are worried that cyclones may track further south, putting more heavily populated and underprepared communities at risk.

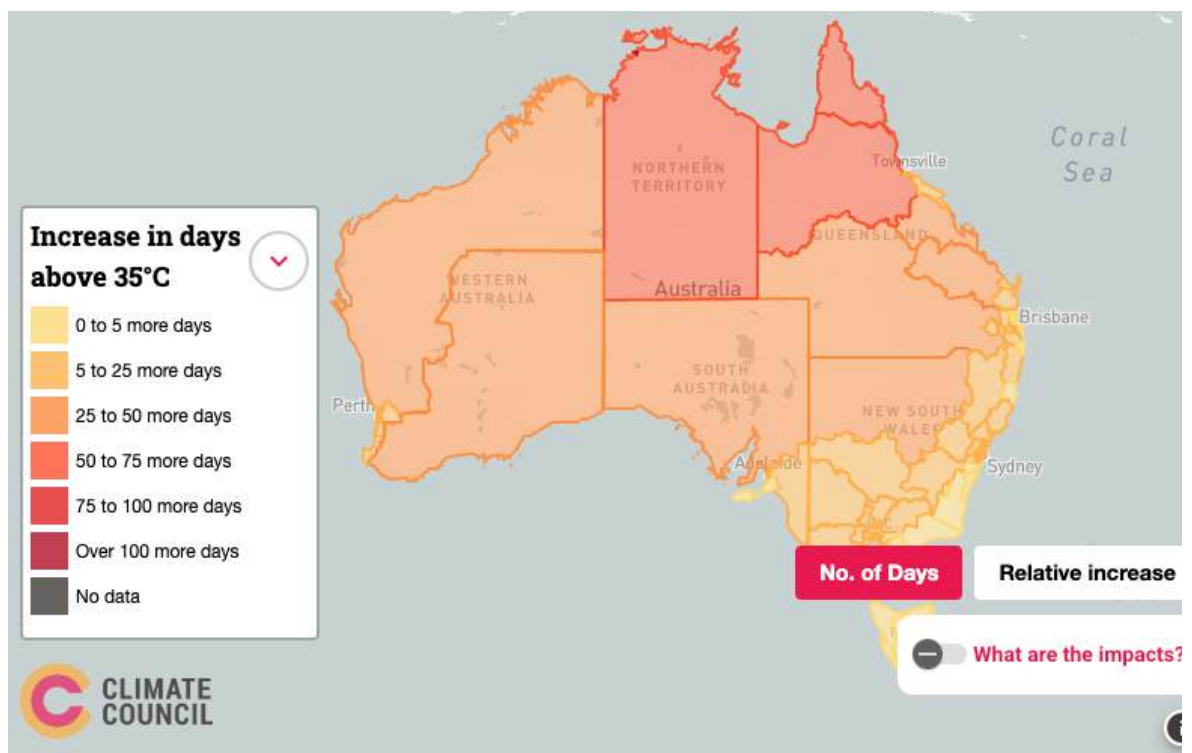
## Climate Council Update

The next term of Federal Parliament will take us most of the way to 2030 - the end of this critical decade for climate action. It means the policies Australians

support at the upcoming election will play a pivotal role in the race to secure a safer future.

***Here are three things you can do right now to push for action from the next Parliament:***

1. [Check out the Heat Map](#) and see the impact slashing climate pollution can have on extreme heat in your electorate.
2. [Sign the pledge](#) to vote for a party or candidate that backs science-aligned cuts to climate pollution. When you sign, your local MP will be sent an email with a link to the Heat Map, informing them of your pledge and asking them to commit to policies that slash pollution.
3. [Share the map](#) with friends and family, so they can see how their electorate will be affected and encourage them to sign the pledge to vote for climate action.



## Help Track the Indian Minor Problem

**MYNA SCAN**

Home About Get involved Resources Contact Start Mapping

Record Myna activity in MynaScan

Record Myna Birds

Log In Register

What MynaScan provides





MynaScan is a resource developed to help community members, pest controllers and biosecurity groups to map sightings and the damage that myna birds cause, and coordinate control efforts with local community groups. MynaScan is free, easy to use, and

Total Records 26,379  
Recent Records 1,224

[Download the app](#)

[Track Myna Bird Records Here](#)



Image courtesy: Justine Rice - Dale Martin

## KOALA CLIMATE CORRIDORS BUNYAS TO BORDER : EXPRESSION OF INTEREST

The Koala Climate Corridors: Bunyas to Border project is an exciting new initiative by Great Eastern Ranges, the International Fund for Animal Welfare and Lockyer Uplands Catchments Inc.

***"to establish a landscape scale habitat corridor between the Bunya Mountains and Main Range National Park to help Koalas and other wildlife adapt to climate change by providing them with safe spaces to move as conditions and food sources shift."***

In the first year of the B2B Project's inception, 2,700 native food and habitat trees and shrubs were planted by 86 volunteers across 21 properties, creating over 19.5 acres of new habitat and linkage corridors for wildlife.

**This year, we are aiming to plant 3,500 native trees and we need your help!**

All planting projects, small or large will be considered for current and future planting rounds (or we can connect you to alternative funding providers to assist you in achieving your project goals)



Image courtesy: Mitchell Roberts

### Eligibility checklist for landholders :

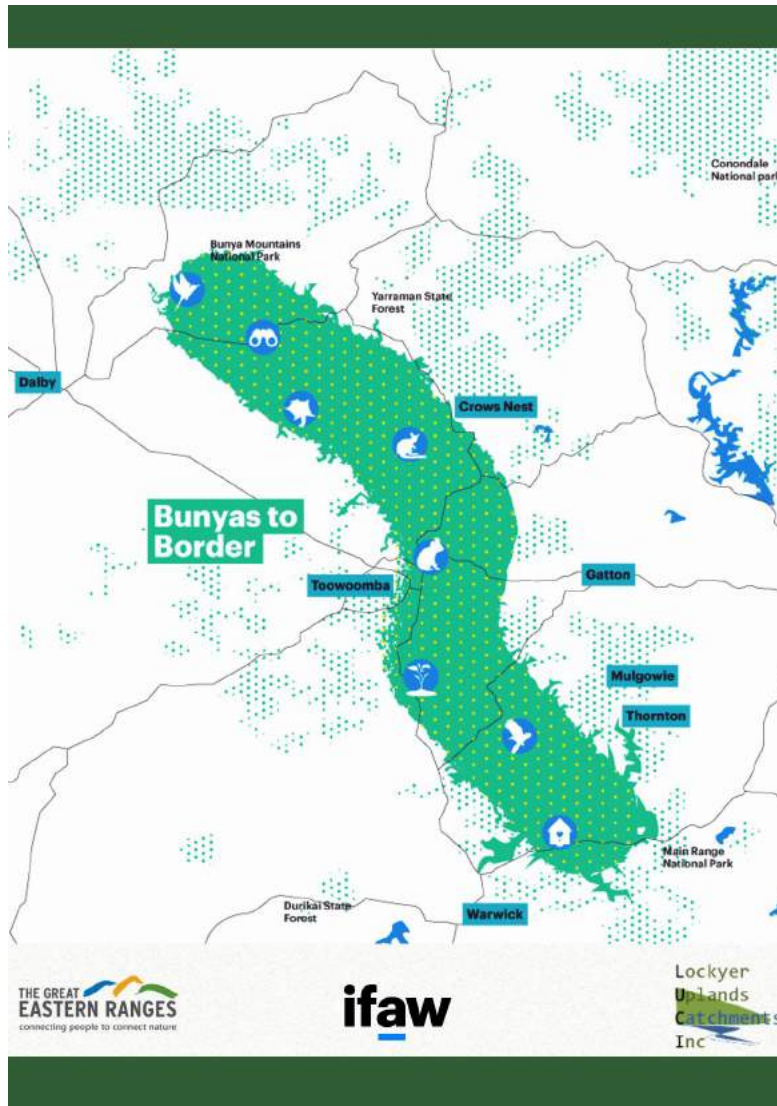
- Own land within / feeding into the B2B Corridor
- Desire to make a difference for native wildlife on your property and contribute to landscape scale connectivity across an important biodiversity corridor
- Willing to revegetate a strip / section of your land with native trees and shrubs that provide food and connecting habitat for Koala, Greater Glider, Glossy Black Cockatoo and other wildlife
- Land is currently fenced off from livestock or able to be fenced off while plants establish
- Willing to get your hands dirty, and get your neighbours, friends, family and / or the broader community involved in your planting project

We would also like to know if you are interested in the following:

- Weed management in existing bushland
- Nest box / arboreal drinking station install
- koala fodder / Glossy Black Cockatoo planting
- Shelter belt planting
- Cultural / ecological burning
- Carbon farming project (>10 ha)
- Workshops / social media

**Please submit your expression of interest form or contact Maree with any queries at [B2B@lockyeruplandscatchmentsinc.org.au](mailto:B2B@lockyeruplandscatchmentsinc.org.au)**





## Solar families will be hit hard 3 times under a nuclear policy:

- 1) Can't save money on power bills because solar panels will be turned off two thirds of the time.
- 2) Forced to pay more for the most expensive energy source – nuclear.
- 3) Taxed up to \$600 billion to build nuclear reactors.

Watch this video of Matt Canavan that says it all about the politics and acknowledges 'nuclear aint cheap'

<https://www.abc.net.au/.../nationals-senator.../104751454>

Find out more here: <https://doubleunderdutton.com.au/>



## DOUBLE UNDER DUTTON

Solar families will be hit

# Are you a budding nature conservation photographer?

Honouring the legacy of acclaimed conservation photographer Wayne Lawler, [Wildlife Queensland](#) is excited to open the 2025 [Wayne Lawler Nature Conservation Photography Grant](#).

This grant (up to **\$2,000**) supports non-professional Australian nature conservation photographers in capturing conservation stories and promoting community-led conservation projects.



**Applications close 30 April 2025.**

For details and to apply, visit [Nature Conservation Photography Grant | Wildlife Preservation Society of Queensland](#)

This program is managed by Wildlife Queensland and funded by a trust established by Wayne Lawler.

**Please share this opportunity with your networks!**

A promotional banner for the Wayne Lawler Nature Conservation Photography Grant 2025. It features a vibrant photograph of a Kingfisher perched on a weathered branch. The text 'Wayne Lawler Nature Conservation Photography Grant 2025' is displayed in white serif font on the left. A white rectangular button with the text 'APPLY NOW' is positioned at the bottom right. A small copyright notice 'image © Wayne Lawler/Ecopix' is in the bottom left corner.

Wayne Lawler  
Nature Conservation  
Photography Grant 2025

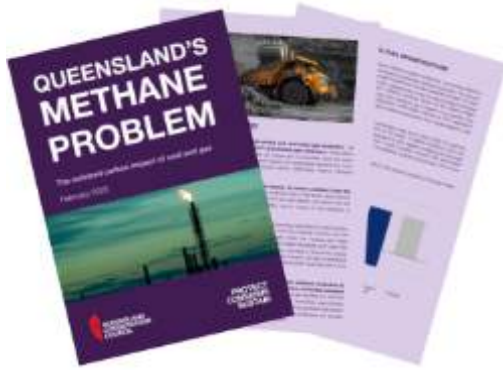
APPLY NOW

image © Wayne Lawler/Ecopix

## Resources sector responsible for



# Resources sector responsible for one third of Queensland's emissions



[Read the full report \(PDF 7.5mb\)](#)

Queensland's resources industry – primarily coal mining and coal seam gas extraction – is responsible for a staggering one third of the state's total greenhouse gas emissions, according to a new report by the Queensland Conservation Council

The report exposes how toxic fugitive methane emissions from coal mining are the biggest source of climate pollution within the resources sector. Without a proper plan to tackle it, Queensland communities and our vital ecosystems like the Great Barrier Reef and the Channel Country are paying the price.

Addressing fugitive methane emissions through strong climate targets, accurate measurement and on site mitigation is a huge opportunity for both the Federal and State governments to achieve climate action and ensure the state remains competitive in a rapidly decarbonising global economy.



## Help Wanted:

Karen is currently hoping to find some interested regenerators to volunteer for FEP. All tools provided. Work wed mornings flexible with time and weather. Contact Karen 0419 101 555





## Free Energy Audits for Farmers

The Energy Southern Queensland (*EnergySQ*) program will help farms understand and manage their on-farm energy consumption and identify ways to reduce your energy spend and carbon footprint. Any farms in the Southern Downs, Western Downs, Toowoomba, Goondiwindi, Lockyer Valley and Scenic Rim regional council areas can participate. Farms can either participate individually or we can work with a 'cluster' of farms in a local area.

Details are available here: <https://www.qff.org.au/projects/energy-sq/>

We're working on the program until next Easter so can provide ongoing advice to participating farms as they join up for that whole period.

[QFF is an independent industry body for agriculture](#), so we don't sell or promote any products or services through the program.



Learn more at [www.qff.org.au/projects/energy-sq/](https://www.qff.org.au/projects/energy-sq/)



Identifying on-farm energy savings

**ENERGYSQ** is a FREE on-farm energy efficiency program to support growers/producers located in the Southern Downs, Western Downs, Toowoomba, Goondiwindi, Lockyer Valley and Scenic Rim regions to:

- understand their on-farm energy consumption, and
- identify ways to reduce their energy spend.

An initiative of



Supported by



# National Trust Tree Registration Opportunity

## **HOW DOES THE SIGNIFICANT TREE REGISTER PROTECT TREES?**

The National Trust is not a statutory body and has no legal powers. Its influence lies in its ability to offer independent expert advice to a variety of government bodies, local councils, community groups and the general public. The Trust can only ensure the conservation of these trees by encouraging careful planning and management around them. At present, the most effective way of protecting trees is to make people aware of the great value of trees. Awareness brings community concern when these trees are threatened by poor management or removal.

The inclusion of trees on the Trust's Register therefore imposes no legal restrictions or obligations on the owners or responsible authorities, nor provides trees with statutory protection. Therefore we encourage you to nominate a tree to the National Trust and then use our endorsement to pursue other avenues, to ensure that trees are not only recognised for their significance but also protected by law.

There are several ways to legally protect significant trees and vegetation. These include, but are not limited to the:

- Local urban planning controls implemented by your local Council or Shire
- State heritage law (for trees with heritage values)
- State environmental law (for trees with natural values)

Protection for the great majority of significant trees is best achieved by local government planning controls.

# Government Support Needed to Stop Food Wastage

Lockyer Valley Foods has released an important press statement highlighting the urgent need for government intervention to protect Australia's food production and supply chains.

This issue affects not only farmers and food producers but also the broader economy and every Australian who relies on a secure and sustainable food system. We encourage you to read the full press release at the link below and share it with others who support the future of Australian-grown food.

[Read the article](#)

Your support and awareness are crucial in ensuring this message reaches decision makers and the wider community.

Thank you for taking the time to engage with this pressing issue.







**Attorney-General withdraws [mining lease objections review](#): Statement from the Chair**

Dear Colleague,

On 4 March 2025 the Attorney-General formally [withdrew the reference for this review](#). The review commenced on 5 June 2023, with the final report and recommendations due shortly, by [30 June 2025](#).

The consultations for this review were extensive and wide ranging. I speak for the Commissioners and our Secretariat staff in thanking the many individuals, communities and professional associations who met with us, sharing their experiences, expertise and ideas during meetings, workshops and in detailed submissions. The [publications](#) for this review demonstrate the value of the constructive and collaborative discussions we have had about this important and complex process.

This reference provided the opportunity for independent advice to reform a complex and dated process. The Commission was well advanced in developing its recommendations. Although disappointed we cannot finalise this work, we respect this is a matter for the Attorney-General.

The Attorney-General advised me the Government's Resources Cabinet Committee will consider policies and initiatives for the resources sector. To facilitate that work, and to make good use of the public resources devoted to this review, the Commission has provided the Minister for Resources with a folder of working papers. The working papers, which can be accessed [here](#), capture the valuable contributions of the many who engaged with the review and the Commission's deep research and considered analysis in fulfilling the terms of reference for this review.

On behalf of the Commissioners, I thank the mining review team in the Secretariat for their dedication and professionalism, both during the review and in ensuring its orderly closure.

Yours sincerely,

Fleur Kingham  
Chair, Queensland Law Reform Commission



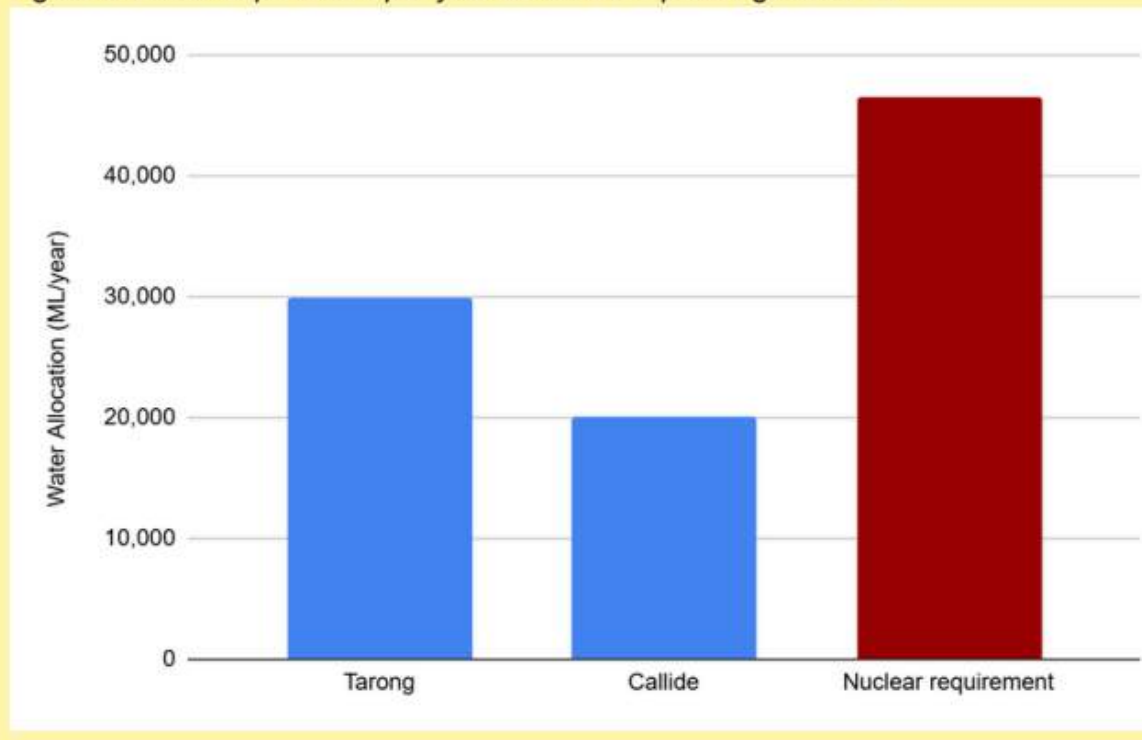
## New Report: Nuclear could Suck Wivenhoe Dry and Still Meltdown

The Coalition's proposed nuclear sites in Queensland would not have access to enough water to manage a nuclear incident, according to explosive new research by the Queensland Conservation Council. In normal operations alone, the proposed nuclear reactor at Callide would use more than double the water currently used by the existing Callide power station, while the one at Tarong would use 55% more water than the existing coal station.

In an emergency situation based on the Fukushima emergency, **a nuclear meltdown could not be prevented even after sucking dry Brisbane's main water supply at Wivenhoe Dam**, and the drinking water supply would also be at risk in **Gladstone** (Awoonga Dam), **Biloela** (Callide Dam) and **Kingaroy** (Boondooma Dam). Areas already prone to severe drought conditions that are likely to become more frequent and more extreme. This research shows there's simply nowhere near enough water capacity in our dams to stop a nuclear meltdown if things go wrong. The Coalition is not being honest with farmers and communities about the realities of their nuclear scheme. At best it's impractical, at worst it's grossly irresponsible and could result in a major incident.

[Read the Report](#)

Figure 1: Water requirement per year for different power generators.



## [Biodiversity Council New Report](#)

[New research](#) conducted by Monash University's BehaviourWorks Australia for the Biodiversity Council has revealed that the environment is among the top 5 issues of

the minds of voters, no matter who they vote for.

The survey also showed a growing dissatisfaction with the federal government's performance and lower levels of trust in the major parties to look after the environment when compared to minor parties and independents.

The findings come from a survey of 3,500 people on attitudes toward nature conservation, which was released in a major report today. Survey respondents were selected to accurately represent the views of the community, based on age, gender, region, and urban and rural areas in the Australian population.

[Read the report](#)

## Re Alliance Renewables Done Right New Series

Welcome to '[Renewables done right](#)', a new series we've been working on, where rural and regional Australians share their experiences of living with renewable energy. Last year we conducted some in-depth research into rural and regional attitudes to the renewable energy shift. That gave us the evidence base we needed to back in what we've been uncovering in our work for more than a decade: communities at the heart of the energy shift are crying out for information that is relevant to their lived experience. **People want to hear real stories, from people like them, about how they are navigating the shift to renewables.**

So, we set out to capture a collection of case studies, travelling across different states to meet with warm, genuine people who generously shared their stories. You can watch those films below at your leisure – and keep an eye out for more to come. If you have a case study that you think should join the family, or if you'd like to know more about our plans to get these stories in front of as many people as possible, please reach out to our Communications Director [Kitty Walker](#).

[Watch the films](#)

## Code of Practice Update for Release of Stored Water on Privately Owned Farms



On the 28 February 2025, the *Code of Practice for the release of stored water from privately owned farm storages to receiving waters in the Queensland Murray-Darling Basin 2025-32*, otherwise known as the Store and Release Code of Practice (2025-32), was gazetted after being approved under the *Environmental Protection Act 1994* by the Minister for the Environment and Tourism and Minister for Science and Innovation. The gazette can be found here: [28 February 2025 Gazette](#)

The Store and Release Code of Practice (2025-32) has replaced the Store and Release Code of Practice which expired on 17 December 2023. The key changes in the new Store and Release Code of Practice (2025-32) were primarily centred around simplifying the monitoring requirements and updating best management practice measures.

We would like to thank everyone for their involvement in the preparation and consultation for this Code of Practice. The Code will be in place for seven years and expire on 14 February 2032.

The Code of Practice and the accompanying Explanatory Guide can be found on the Department's website at the following locations:

- [Environmental codes of practice for industry | Business Queensland](#)
- [Queensland Murray-Darling and Bulloo basins | Environment | Department of the Environment, Tourism, Science and Innovation, Queensland](#)



Toowoomba representatives of A Rocha Australia have recently completed a report on observations of bird life in Duggan Bushland Park undertaken during 2024. The report has been linked from the [Duggan Bushland Park](#) page along with earlier reports and is available here:

[Read Here](#)

## Community Events

# Harmony Day Picnic

Join in the fun, colour and celebration of Harmony Day at Grand Central!  
[Grand Staircase, near Vapiano](#)

An event by the [Toowoomba International Multicultural Society](#) (TIMS). Join in the fun, colour and celebration of Harmony Day by joining us on the Grand Staircase on Saturday 5 April.

From 10am until 2pm this free Harmony Day Picnic will showcase Inspiration Speakers, a Traditional Welcome to Country and Smoking Ceremony, Cultural Dancers, Performers and Musicians, Interactive Workshops and a Cultural Fashion Show.

This free event welcomes everyone to come and join in the celebration of cultural diversity.

**Date:** Saturday 05 April 2025

**Time:** 10am to 2pm

**Location:** Grand Central, Grand Staircase, near Vapiano

**Cost:** Free Event



COME VOLUNTEER AT ONE OF OUR FREE  
COMMUNITY TREE PLANTING DAYS  
DEDICATED TO CREATING SAFE CORRIDORS  
FOR WILDLIFE TO MOVE ACROSS, FOOD FOR  
KOALAS AND SECURING A GREENER FUTURE  
FOR THE BUNYAS TO BORDER CORRIDOR

# PLANT A TREE FOR WILDLIFE

Find out more

**DATES**

- Saturday 5th April (Plainby)
- Saturday 12th April (Thornville)
- Saturday 3rd May (Crows Nest)

**TIME**

Arrive at 8:30am for Sign in and planting demo - start planting at 9:00am - Morning tea provided at 11:00am

**REGISTRATION**

Contact Maree on 0494 156 756 or [B2B@lockyeruplandscatchmentsinc.org.au](mailto:B2B@lockyeruplandscatchmentsinc.org.au)

A Koala Climate Corridors initiative by:

**ifaw** **THE GREAT EASTERN RANGES** **Lockyer Uplands Catchments Inc**

connecting people to connect nature

Hello everyone,

We are currently looking for volunteers to help us in April / May with 3 x corridor plantings and 1 x koala fodder plantation over 3 properties in the Crows Nest area.

Each event will require planting of between 400 and 500 native, endemic trees and shrubs + fertiliser + mulch + tree guards + watering so plenty to do and lots of time to talk with each other and these amazing landholders over morning tea provided at the end.

Would love to see you there, or please feel free to share the attached flyer within your groups and on your social media pages.

Happy to answer any further questions you have around the events.

Kind regards

**Maree**

**Maree Clancy, B2B Project Coordinator**

**Mob 0494 156 756**

[RSVP Here](#)

**Condamine Catchment Management Association**

**Empower Yourself with Cutting-Edge Skills:**

**Funded by:**

**GAMBLING COMMUNITY BENEFIT FUND**

**Book by 17/04/2025**

**FREE**



# WORKSHOPS COMPUTER SKILLS

**BYO LUNCH @ ROSE COTTAGE NEWTOWN**

 <b>Friday</b> <b>9th May</b>	 <b>9am till</b> <b>2 pm</b>	<b>Workshop #1:</b> <b>Windows 10,</b> <b>Word Excel</b> <b>PowerPoint</b>
 <b>Friday</b> <b>16th May</b>	 <b>9am till</b> <b>2 pm</b>	<b>Workshop #2:</b> <b>Windows 11,</b> <b>Word Excel</b> <b>PowerPoint</b>
 <b>Saturday</b> <b>31st May</b>	 <b>9am till</b> <b>2 pm</b>	<b>Workshop #3</b> <b>Individual</b> <b>Support/</b> <b>Troubleshooting</b>

Register Now

Email: [glenysbowtell@bigpond.com](mailto:glenysbowtell@bigpond.com)  
 Phone 0428 751 070

## Present at the 2025 NextGen Landcare Summit!

Are you a young person making a difference in your community? Share your story at the 2025 NextGen Landcare Summit, held as part of the 2025 National Landcare Conference.

Date: **Sunday, 21 September 2025**

We're inviting young changemakers to present or submit a poster showcasing their ideas, innovations, and impact. This is your chance to connect and inspire.

Register your free ticket\* now and submit an abstract to highlight what you're doing to protect and restore the environment!

\*Free for young adults aged 18 to 25

Free for young adults aged 18 to 35.



[Register Here](#)



We are proud to be your voice for the environment in the Darling Downs!

Feel free to donate however as we are now DGR registered. No pressure, but it would be great for the future of DDEC and the active community of groups now using the centre.

Your donation supports our important work and ensures that we can rise to the challenges that lay ahead. All donations are now tax deductible.

Click on the image to go to our donations page.

Another way to support our work is to consider adding DDEC into your will to leave a legacy for our environment.

[Include DDEC in your Will Today](#)





**Darling Downs Environment Council**

DDEC acknowledges the Traditional Custodians of the land on which we work and live, people of the Wakka Speaking Nation, the "Bunya Burra".

Darling Downs Environment Council · Australia  
This email was sent to [palbion@me.com](mailto:palbion@me.com) · [Unsubscribe](#)

Created with [NationBuilder](#). Build the Future.

